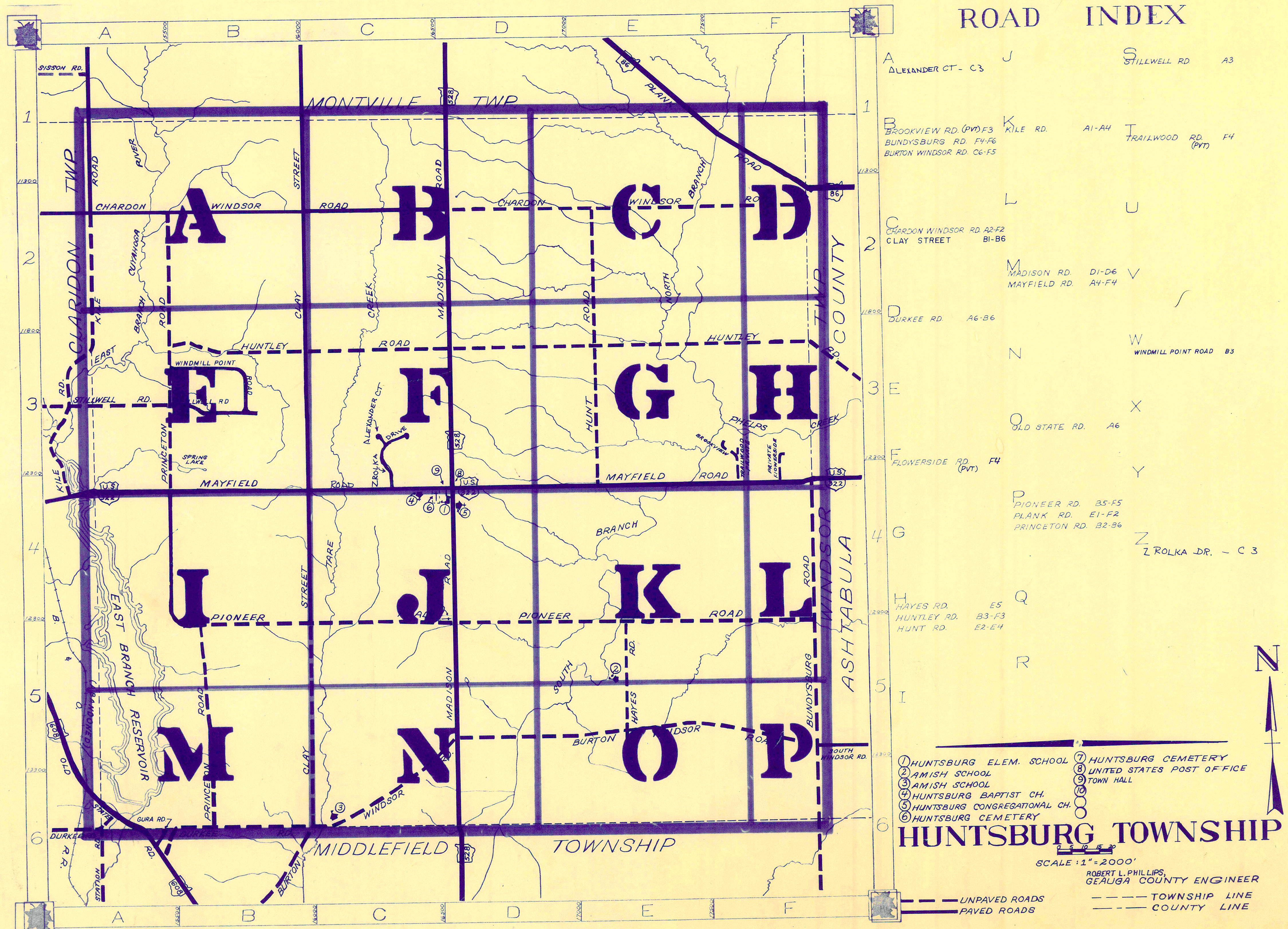
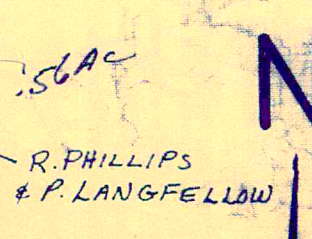
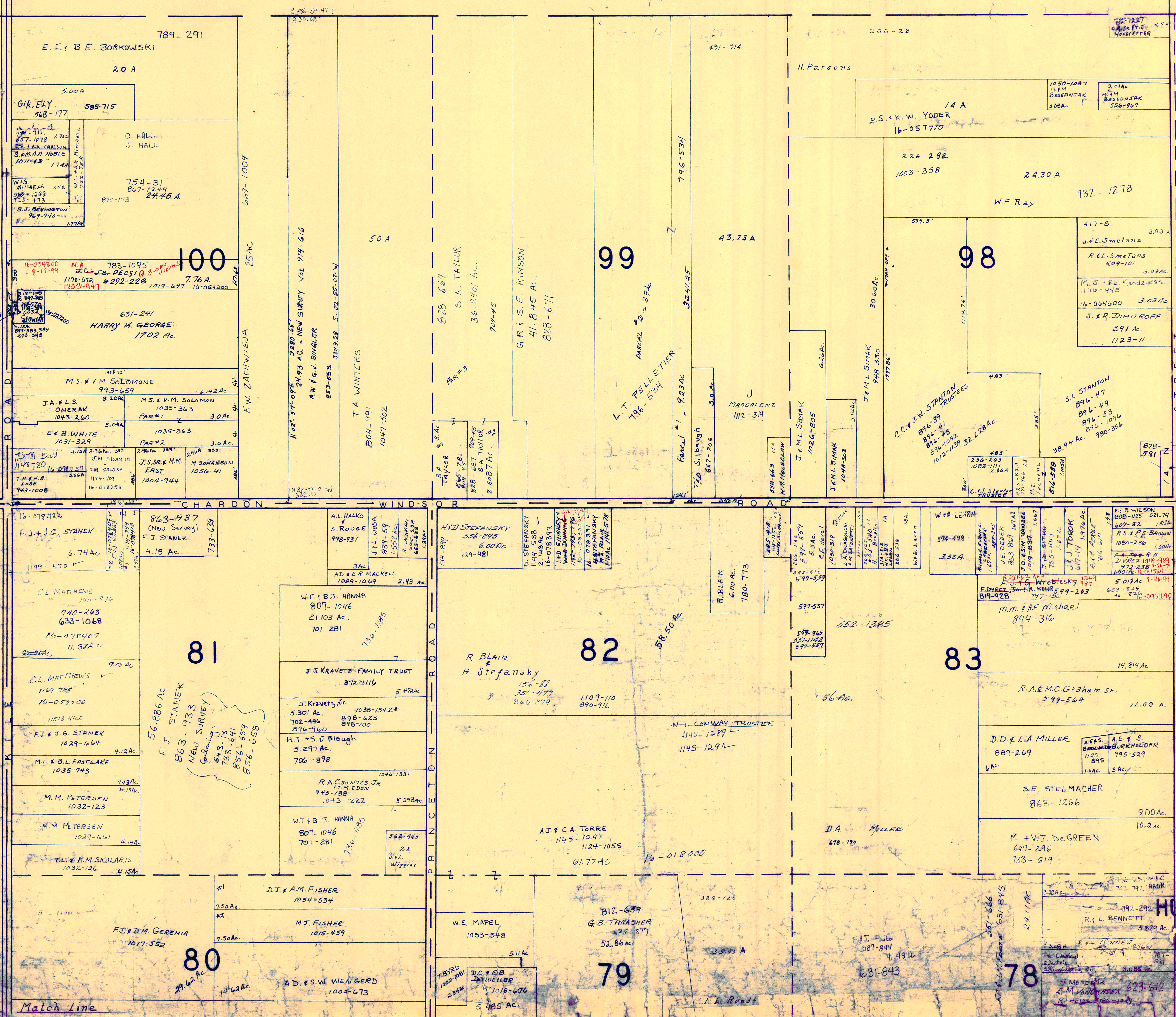


Last Updated 8-20-99  
Please see GIS



MONTVILLE TOWNSHIP

CLARIFORD TOWNSHIP



SCALE 1 = 300

JAN 1, 1994

|   |   |   |   |
|---|---|---|---|
| A | B | C | D |
| E | F | G | H |
| I | J | K | L |
| M | N | O | P |

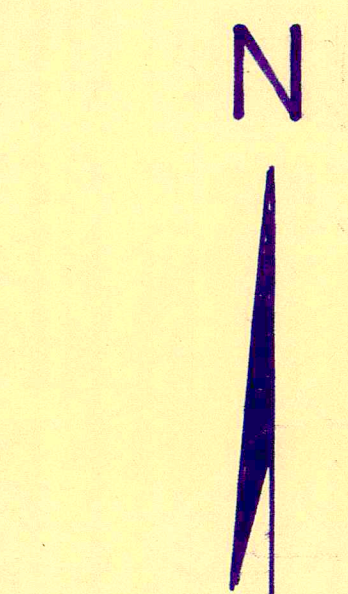
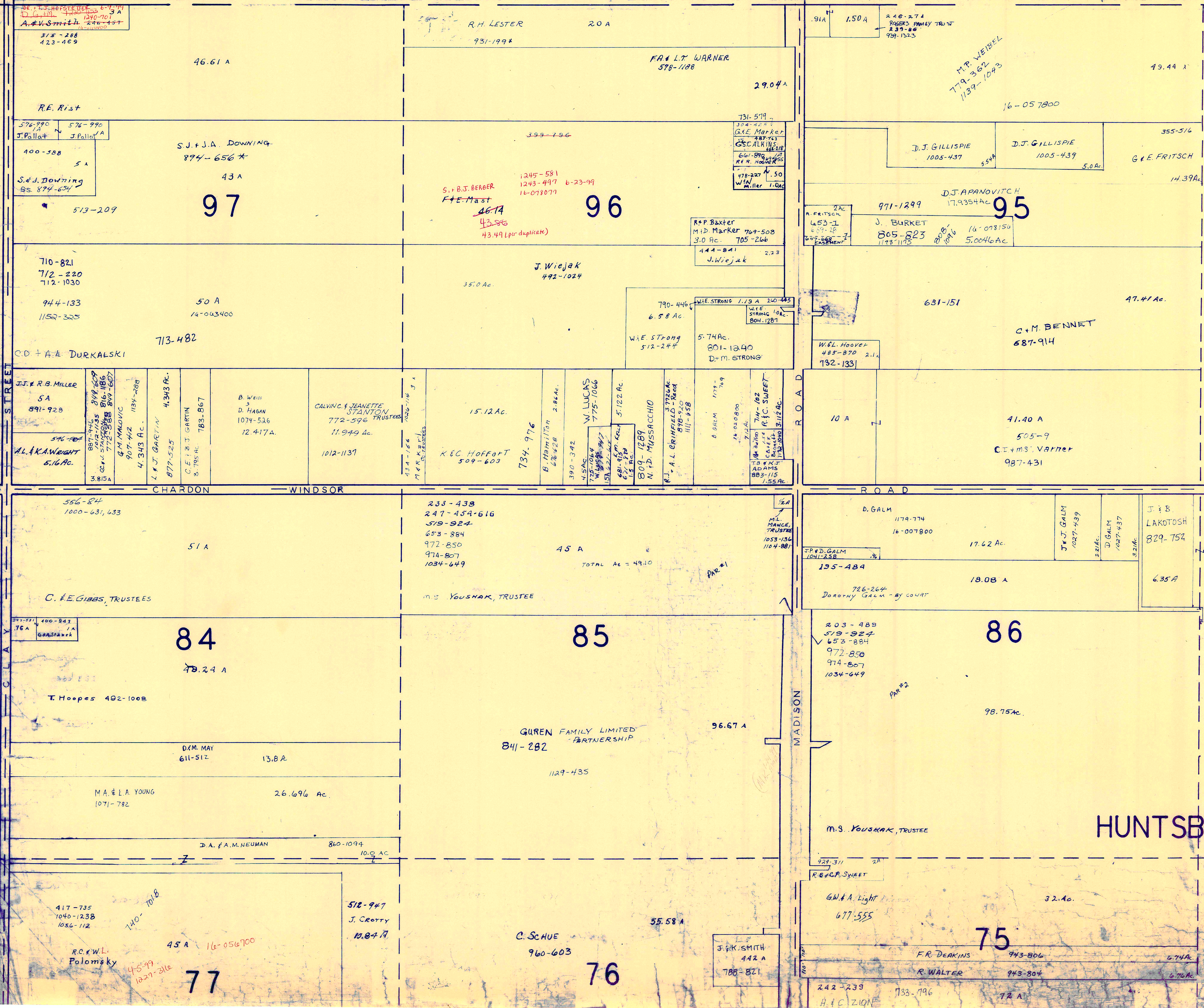
HUNTSBURG TWP

RELATIVE REPRESENTATION indicates survey on file with tax maps inadequate description

Match Line

MONTVILLE

TOWNSHIP



Indicates  
Survey on file  
with tax map  
dept.

SCALE 1" = 300'  
JAN. 1, 1999

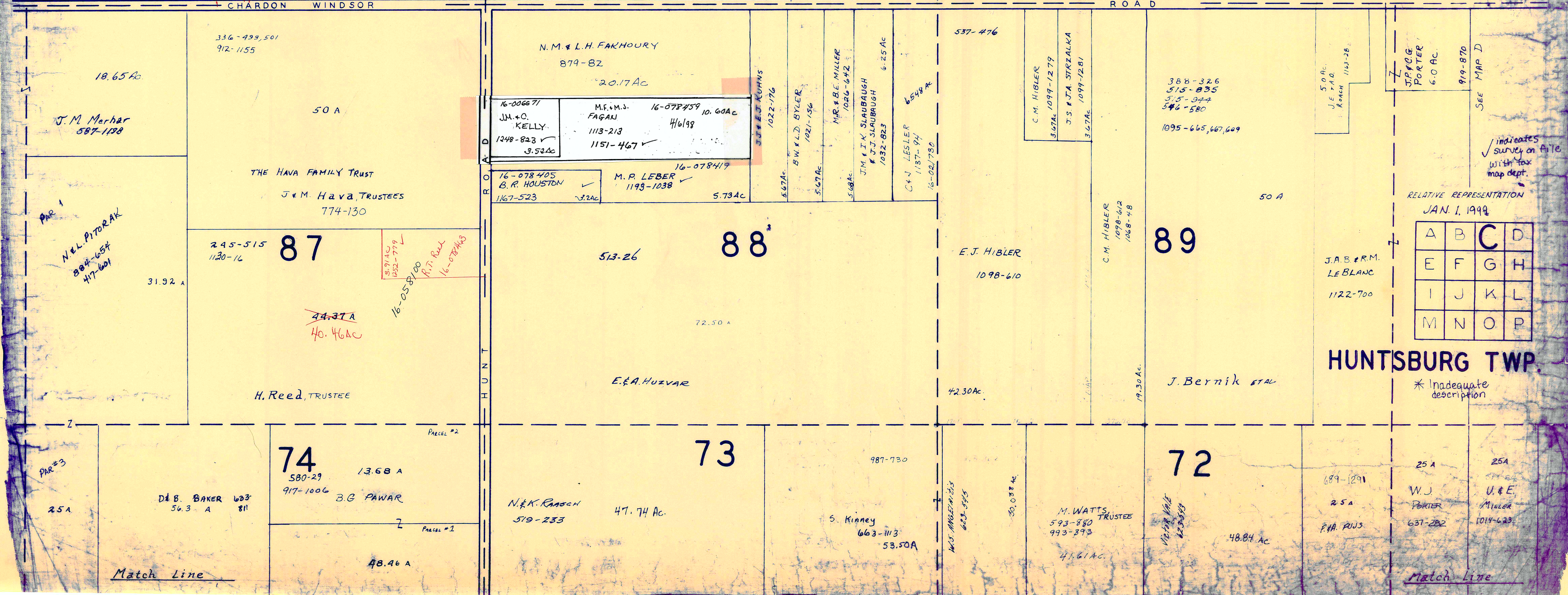
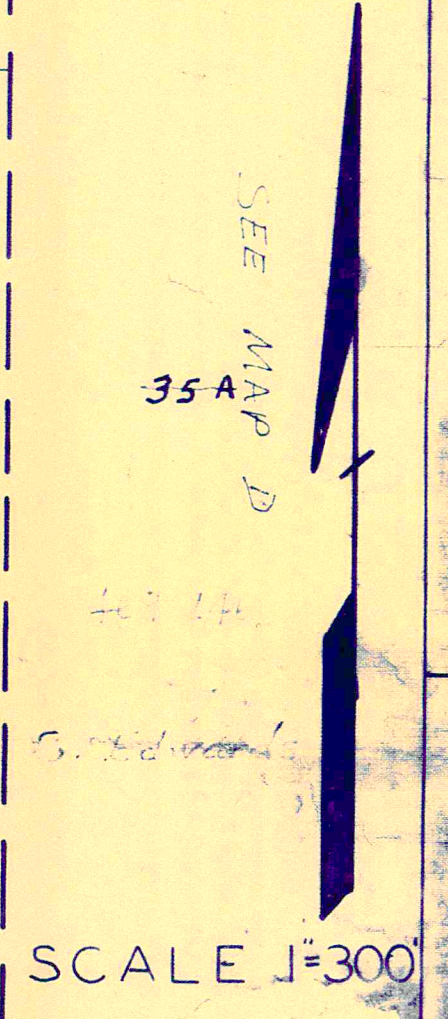
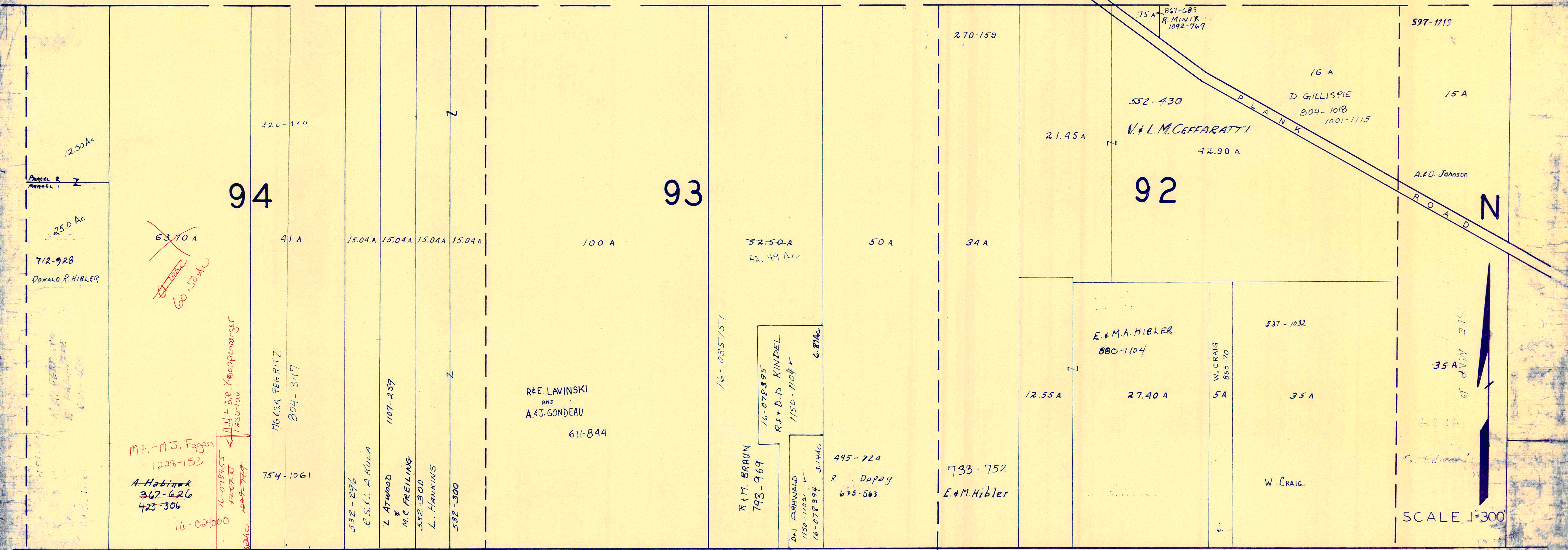
RELATIVE REPRESENTATION

|   |   |   |   |
|---|---|---|---|
| A | B | C | D |
| E | F | G | H |
| I | J | K | L |
| M | N | O | P |

HUNTSBURG TWP.

\* inadequate description

MONTVILLE TOWNSHIP



indicates survey on file with tax map dept.

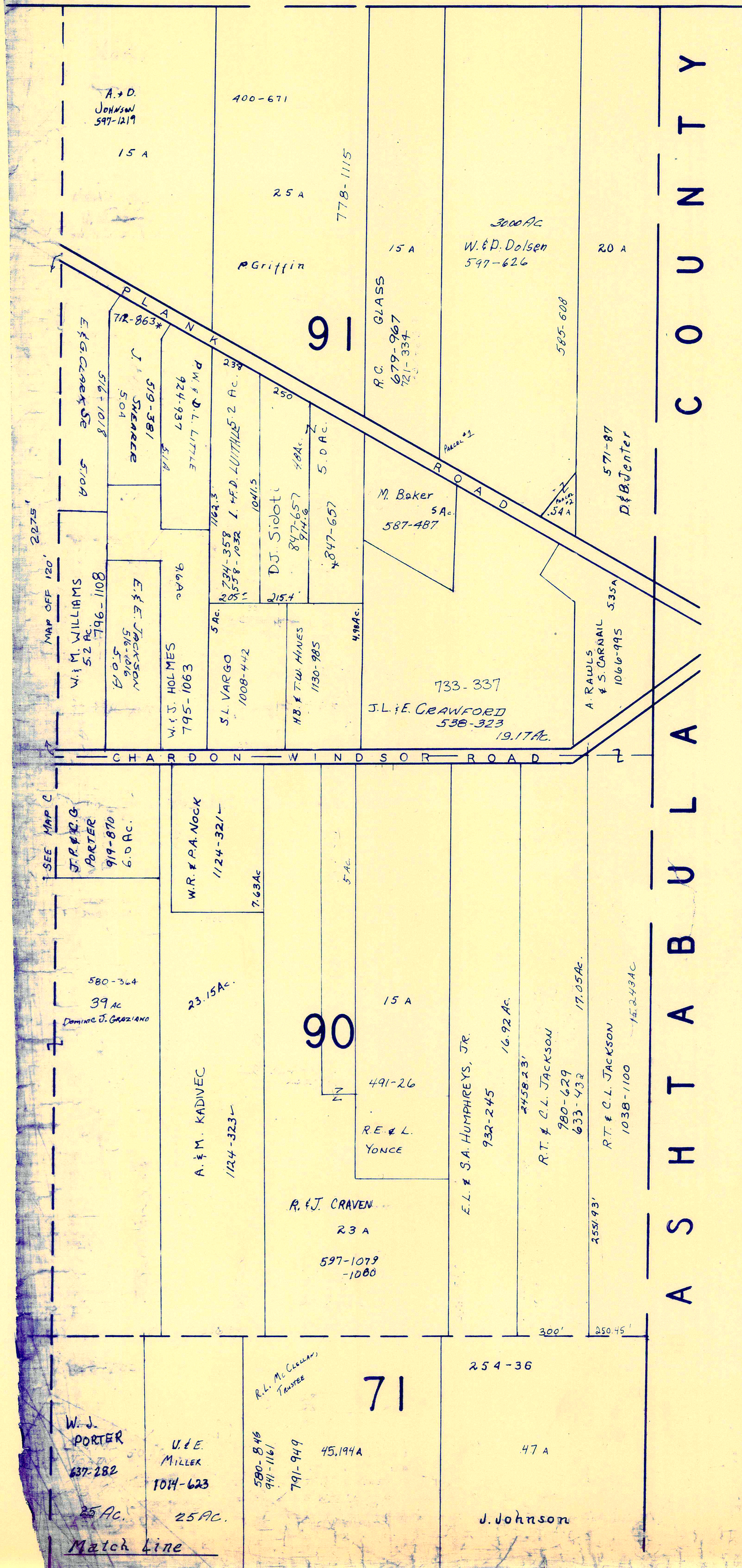
RELATIVE REPRESENTATION  
JAN. 1, 1999

|   |   |   |   |
|---|---|---|---|
| A | B | C | D |
| E | F | G | H |
| I | J | K | L |
| M | N | O | P |

HUNTSBURG TWP.

\* Inadequate description

MONTVILLE TWP.



SCALE 1"=300'

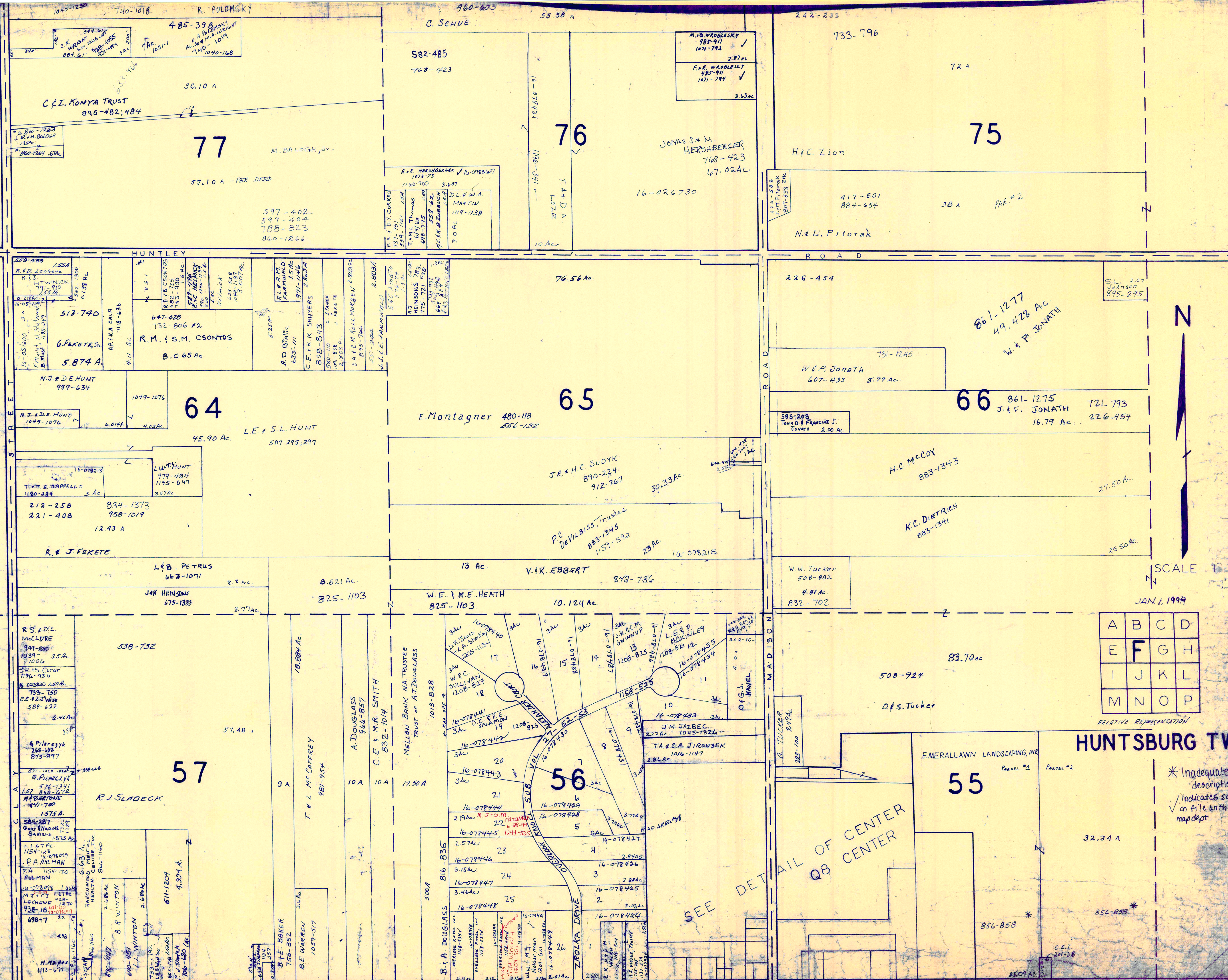
JAN. 1, 1999

✓ Indicates survey on file with tax map dep  
\* Inadequate description

|   |   |   |   |
|---|---|---|---|
| A | B | C | D |
| E | F | G | H |
| I | J | K | L |
| M | N | O | P |

HUNTSBURG TWP.  
RELATIVE REPRESENTATION





SCALE 1" = 300'

JAN 1, 1999

|   |   |   |   |
|---|---|---|---|
| A | B | C | D |
| E | F | G | H |
| I | J | K | L |
| M | N | O | P |

HUNTSBURG TWP.

\* Inadequate description indicates survey on file with tax map dept.

75

76

77

65

64

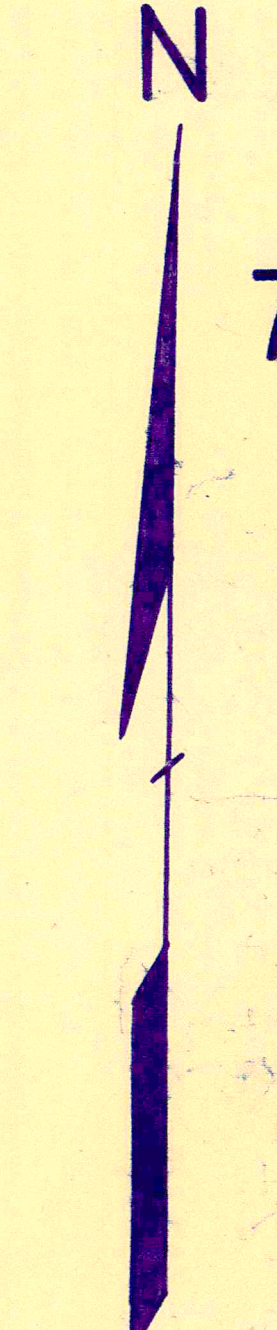
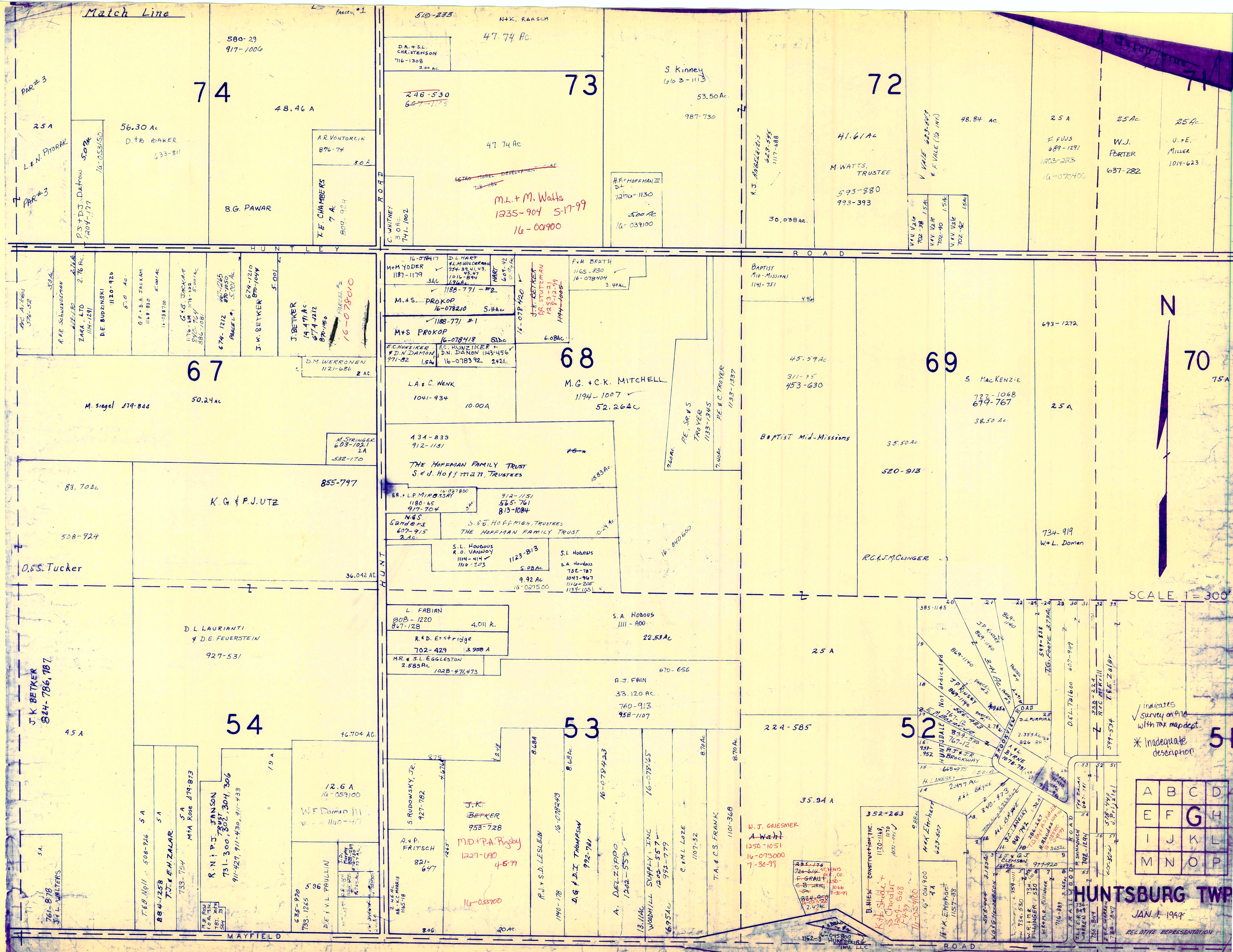
66

57

55

56

SEE DETAIL OF CENTER Q8 CENTER



SCALE 1" = 300'

✓ indicates survey on file with tax mapdept.  
\* Inadequate description

|   |   |   |   |
|---|---|---|---|
| A | B | C | D |
| E | F | G | H |
| I | J | K | L |
| M | N | O | P |

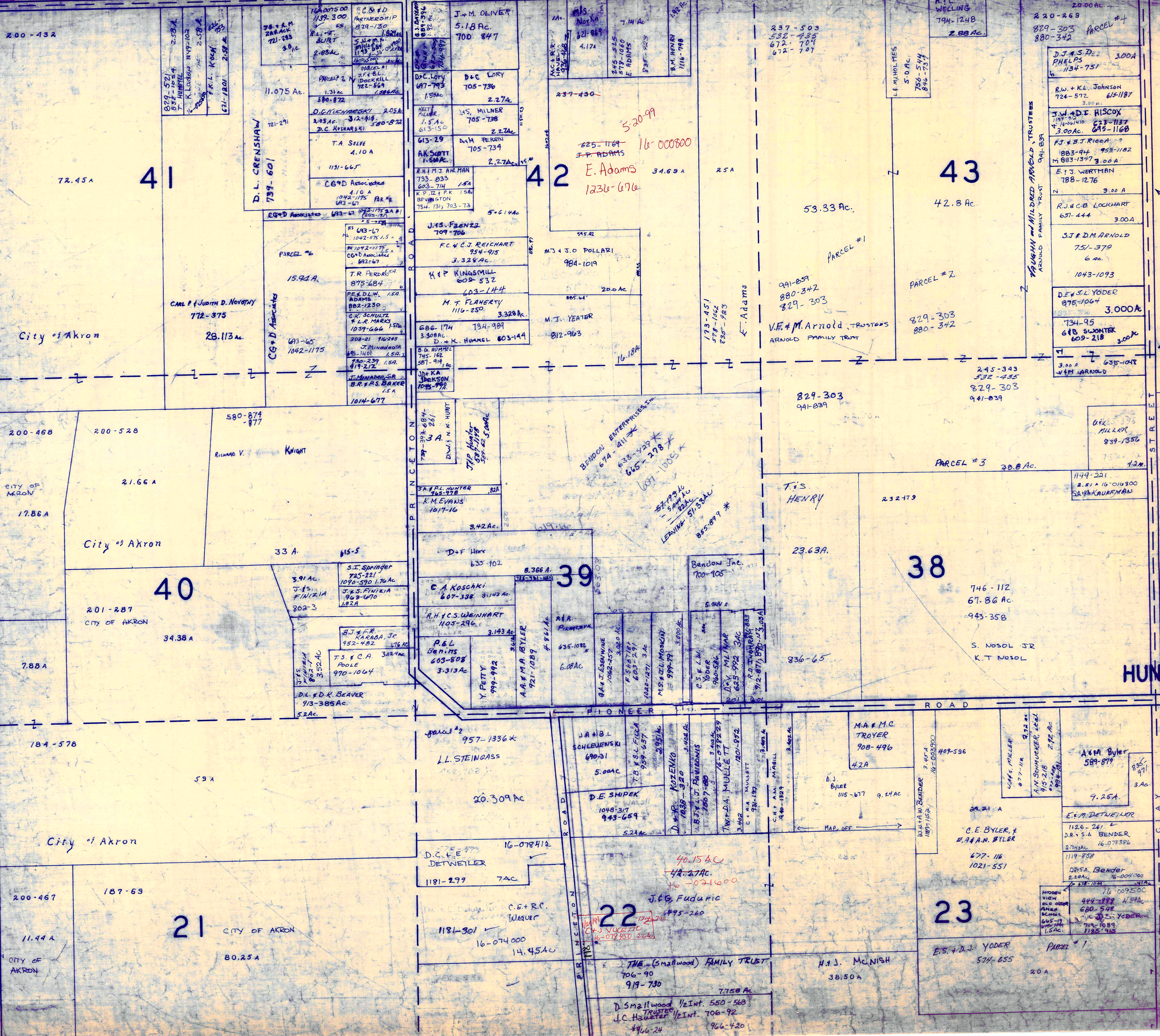
**HUNTSBURG TWP**  
JAN. 1, 1999  
RELATIVE REPRESENTATION



CLARIFORD TOWNSHIP

MAYFIELD ROAD

ROAD



SCALE 1"=300'  
JAN 1, 1998  
RELATIVE REPRESENTATION  
indicates survey  
on file with  
tax map dept.

|   |   |   |   |
|---|---|---|---|
| A | B | C | D |
| E | F | G | H |
| I | J | K | L |
| M | N | O | P |

HUNTSBURG TWP.

\* Inadequate description  
13.25 A

SEE MAP J  
10 A  
10 A



BOARD OF TRUSTEES OF  
HUNTSBURG TOWNSHIP  
824-668

47

97 Ac.

Huntsburg Twp Trustees  
508-1330

J.P. LOVE, TRUSTEE  
GAIL JOANNE LOVE  
REVOCABLE TRUST

48

901-180  
50.58 AC.

710-582  
722-316

49

257.50 AC  
224.05 AC  
16-078403

HUNTSBURG INVESTMENTS, LLC  
1152-3

237-222  
854-756  
933-1202  
JA BRULE  
953-367  
1102-704  
TOTAL 62.363 AC.  
(47.14 AC. Lot 46)  
(15.222 AC. Lot 47)

AL + P.A. BYRNE - 1136998  
953-365  
TOTAL 69.738 AC.  
(5.748 AC. Lot 46)  
(15.259 AC. Lot 47)  
(48.13 AC. Lot 85)

862-954\*  
LEAVING 68.206 on TAX DUPLICATE  
- 8159  
67.3901 AC.  
647-177  
A.H.L. SMITH  
1100-504\*

JK BETKER  
870-1053  
PARCEL #1

32.86 A

T.P.D. FRANK  
784-404  
444-103

T.A. + D.A. FRANK  
16-06200  
1180-866\*

REXGA ARMSTRONG'S  
917-1241 SA  
661-542  
759-1196  
REXGA ARMSTRONG  
917-1241 SA  
661-542  
759-1196  
REXGA ARMSTRONG  
917-1239 SA  
661-542  
759-1196  
REXGA ARMSTRONG  
917-1239 SA  
661-542  
759-1196  
J.M. MILLER  
NO FRANCHISE  
826-556  
5-960 AC.

34

52.19 A

M.M. MILLER  
665-1252

43 A

542-1203  
999-346  
1027-149  
D.F. DROTAR

33

96.93 AC.

J.J. + E.B. MAST  
599-505

233-320+273  
728-691\*  
912-1157\*  
1201-158

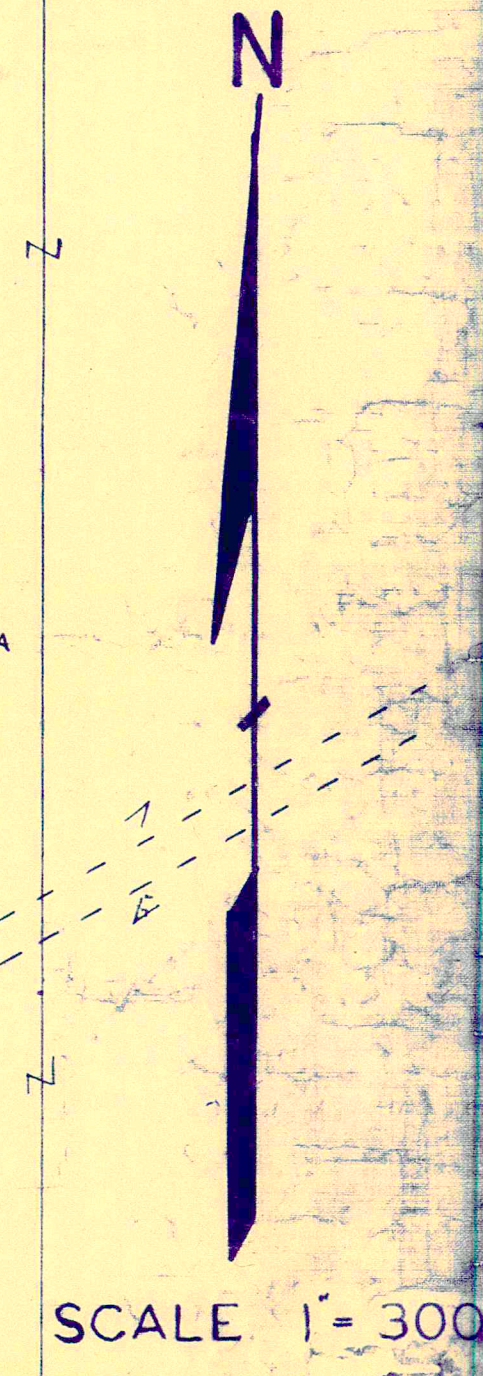
PARCEL #1  
870-1053

46.15 A  
16-060400

32

HUNTSBURG INVESTMENT, LLC  
1161-699  
16-078402

THE RUDOWSKY  
FAMILY TRUST  
STEPHEN Rudowski, Jr  
TRUSTEE



R.L. & G.A.  
GWINN  
1107-101  
Match Line  
R.G. JR. & B.L.  
TOWNSEND  
1107-92  
637-546  
663-839  
1107-98  
48.68 AC

27

D.W. + B.D. MILLER  
718-1082  
23.10 AC

701-48  
701-98  
637-1081  
M. DONALD  
3.75 AC  
16-078456  
1235-149  
792-991  
792-887  
TOTAL = 45.54 AC

49.30 AC.

J.+I. DETWEILER  
699-127, 129

523-708  
7.5 A  
C. J. + M. J. MILLER

35.64 AC.

J.+I. DETWEILER  
699-127, 129

28

SEE MAP  
5 AC  
SEE  
5 AC  
MAP  
5 AC  
SEE MAP - 0"

N.R. + E.J. BYLER  
680-340

73 A

16-078396  
1154-1094  
MISTERKA  
5.17 AC

A. Misterka

29

187-525  
193-39  
811-1025  
844-624  
16-078451  
A.P. MISTERKA  
5.28 AC

Parcel # 2

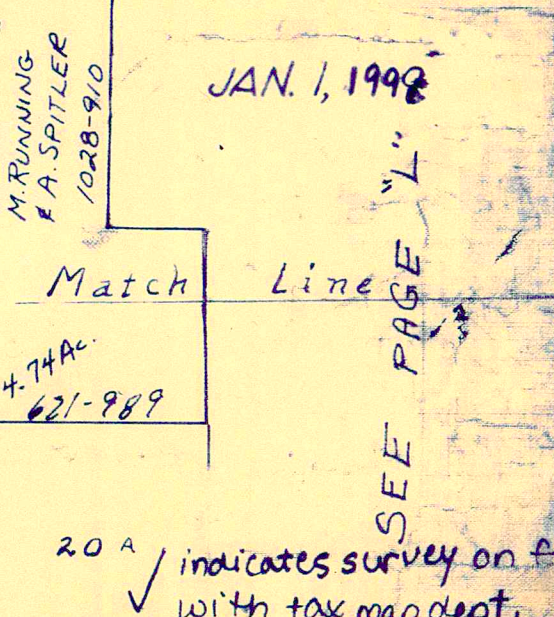
16-049900  
SS. 14 AC  
48.12 AC  
92.95 AC

R.A. MISTERKA  
685-462  
4.5 AC  
PARCEL #1

16-078356  
844-624  
19.87 AC

U. + J.  
BYLER  
562-329  
743-16  
ZAC

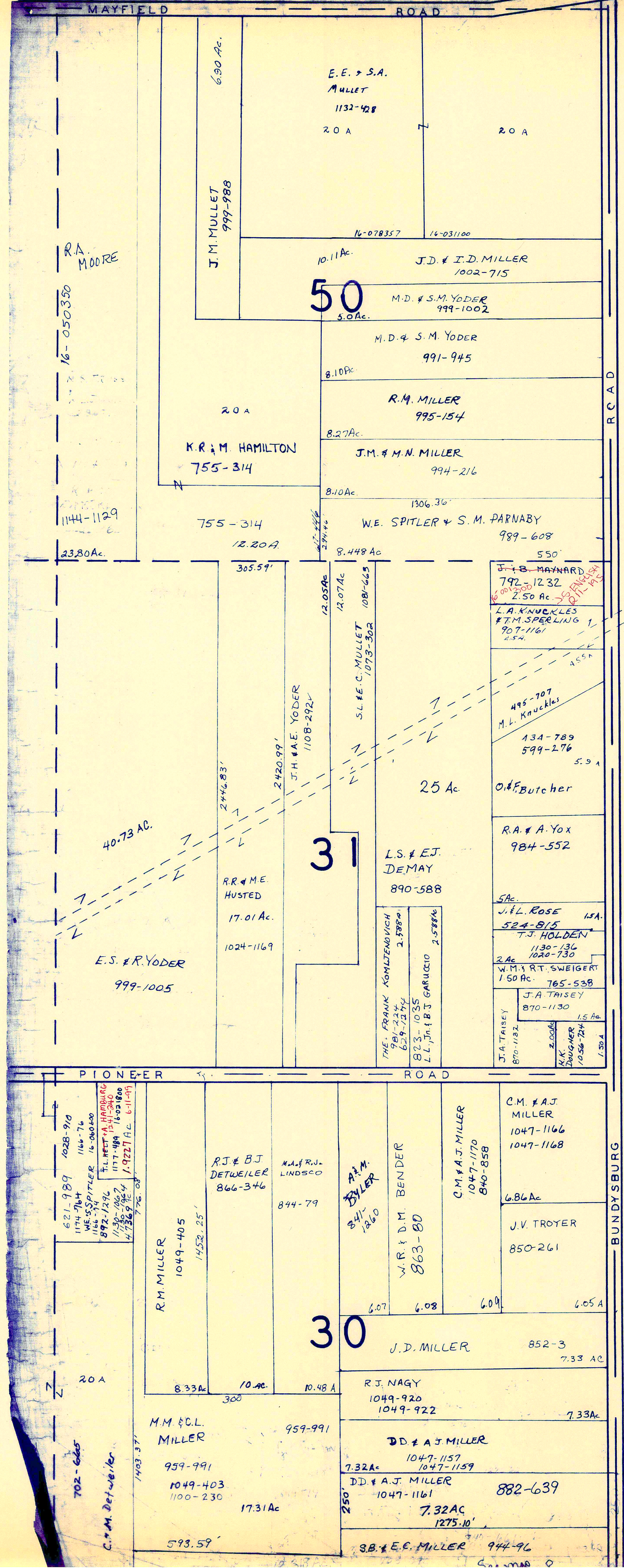
18.25  
702-665  
C.J. + M.H.  
Detweiler



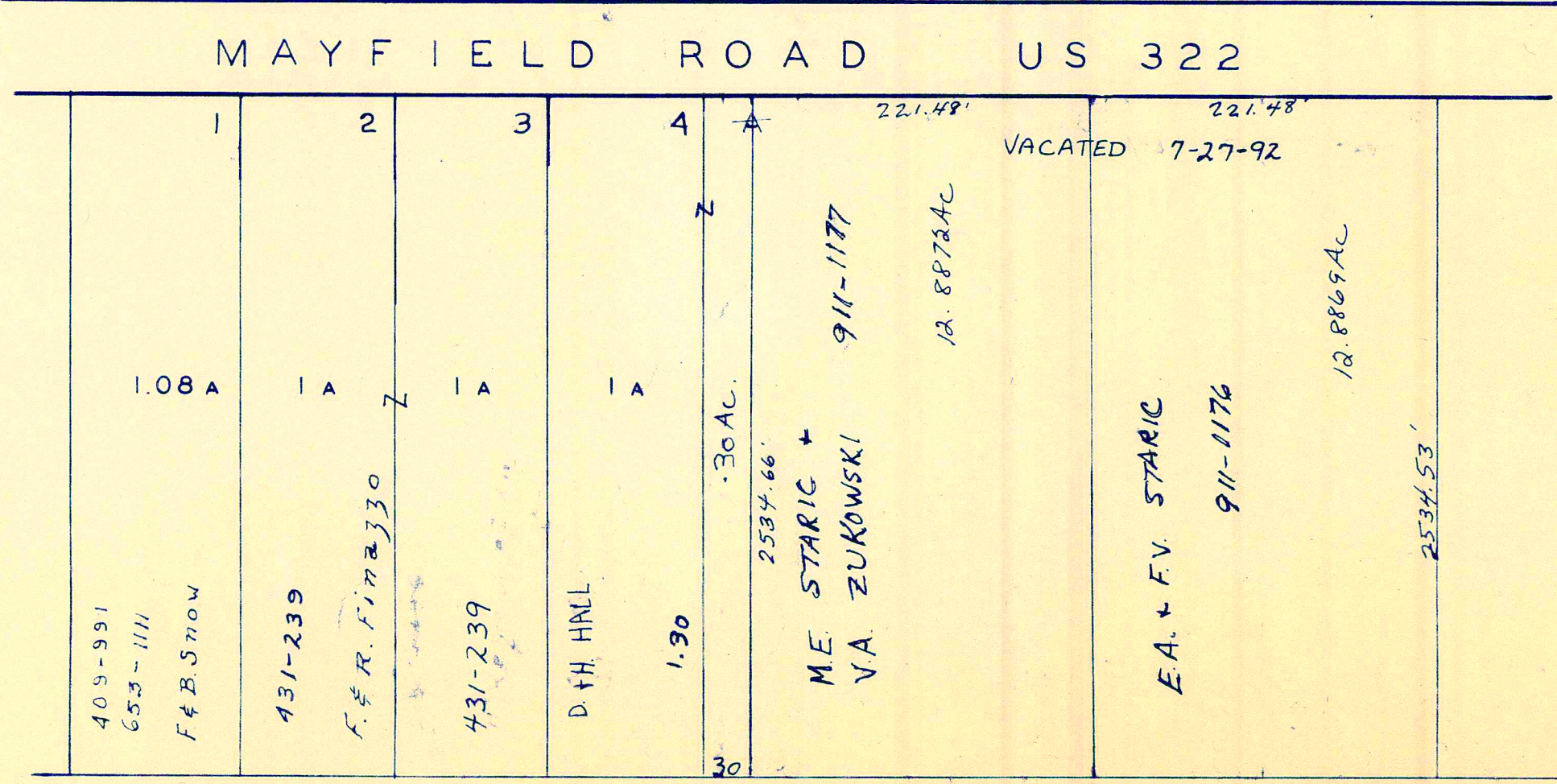
|   |   |   |   |
|---|---|---|---|
| A | B | C | D |
| E | F | G | H |
| I | J | K | L |
| M | N | O | P |

HUNTSBURG TWP.  
RELATIVE REPRESENTATION  
\* Inadequate description

SCALE 1" = 300'



A S H T A B U L A C O U N T Y



SICZ SUBDIVISION VACATED - BLOCK A,  
VOL. 6 - PG. 87  
LOT 44  
SCALE 1" = 100'



SCALE 1" = 300'

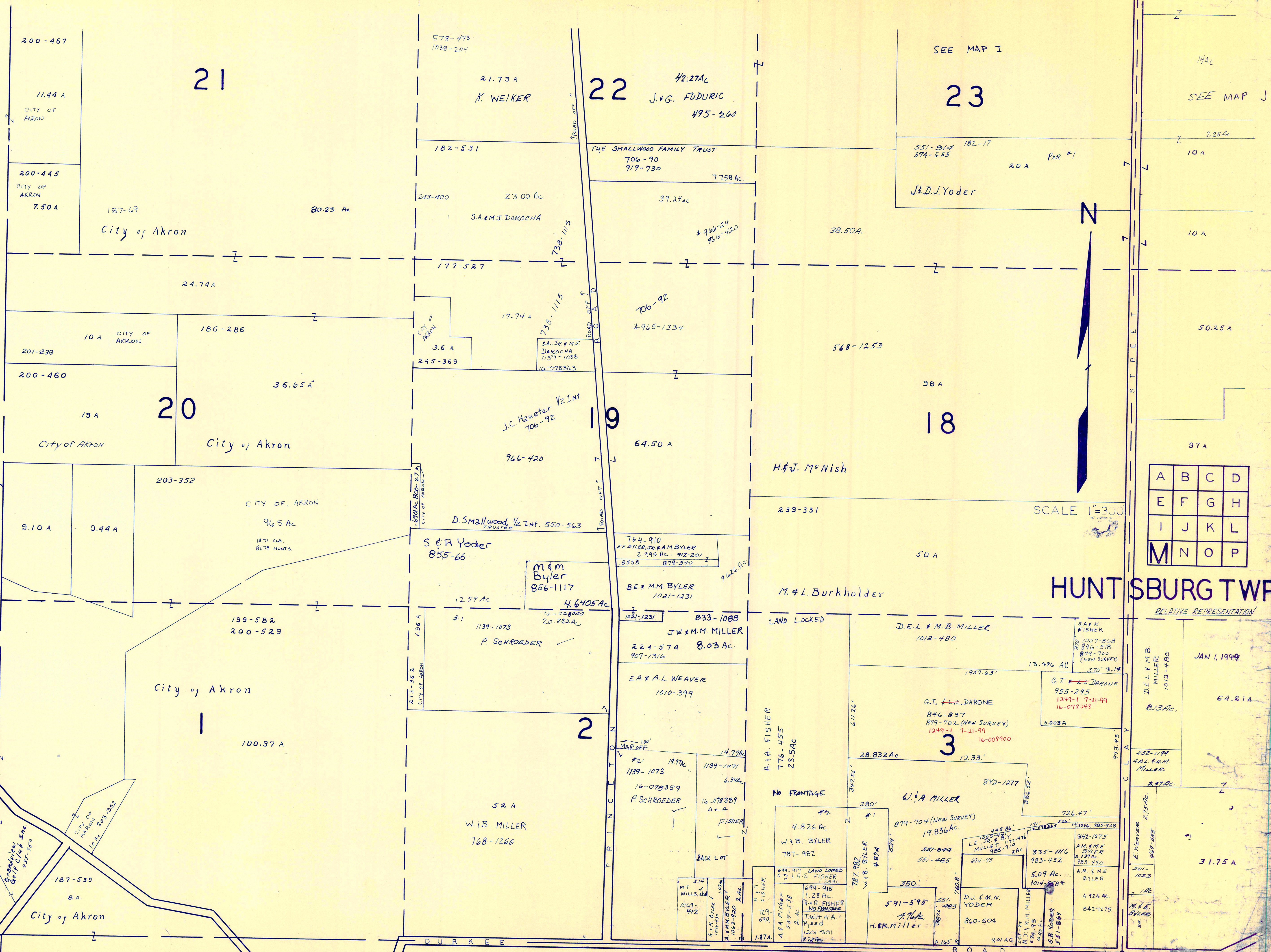
JAN 1, 1999

\* Inadequate description  
RELATIVE REPRESENTATION

|   |   |   |   |
|---|---|---|---|
| A | B | C | D |
| E | F | G | H |
| I | J | K | L |
| M | N | O | P |

HUNTSBURG TWP.

C L A R I D O N T O W N S H I P



SCALE 1"=300'

|   |   |   |   |
|---|---|---|---|
| A | B | C | D |
| E | F | G | H |
| I | J | K | L |
| M | N | O | P |

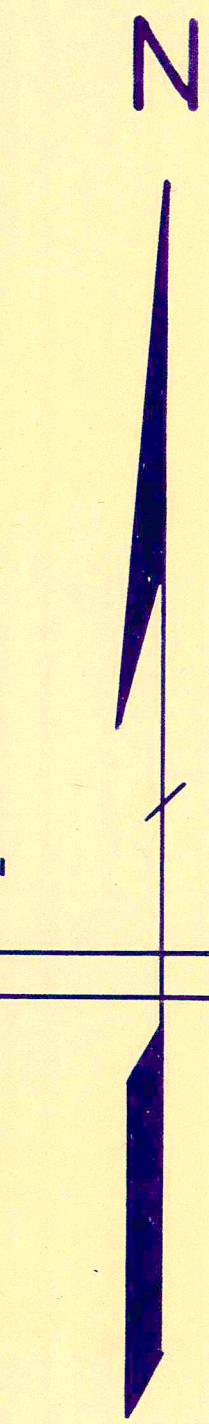
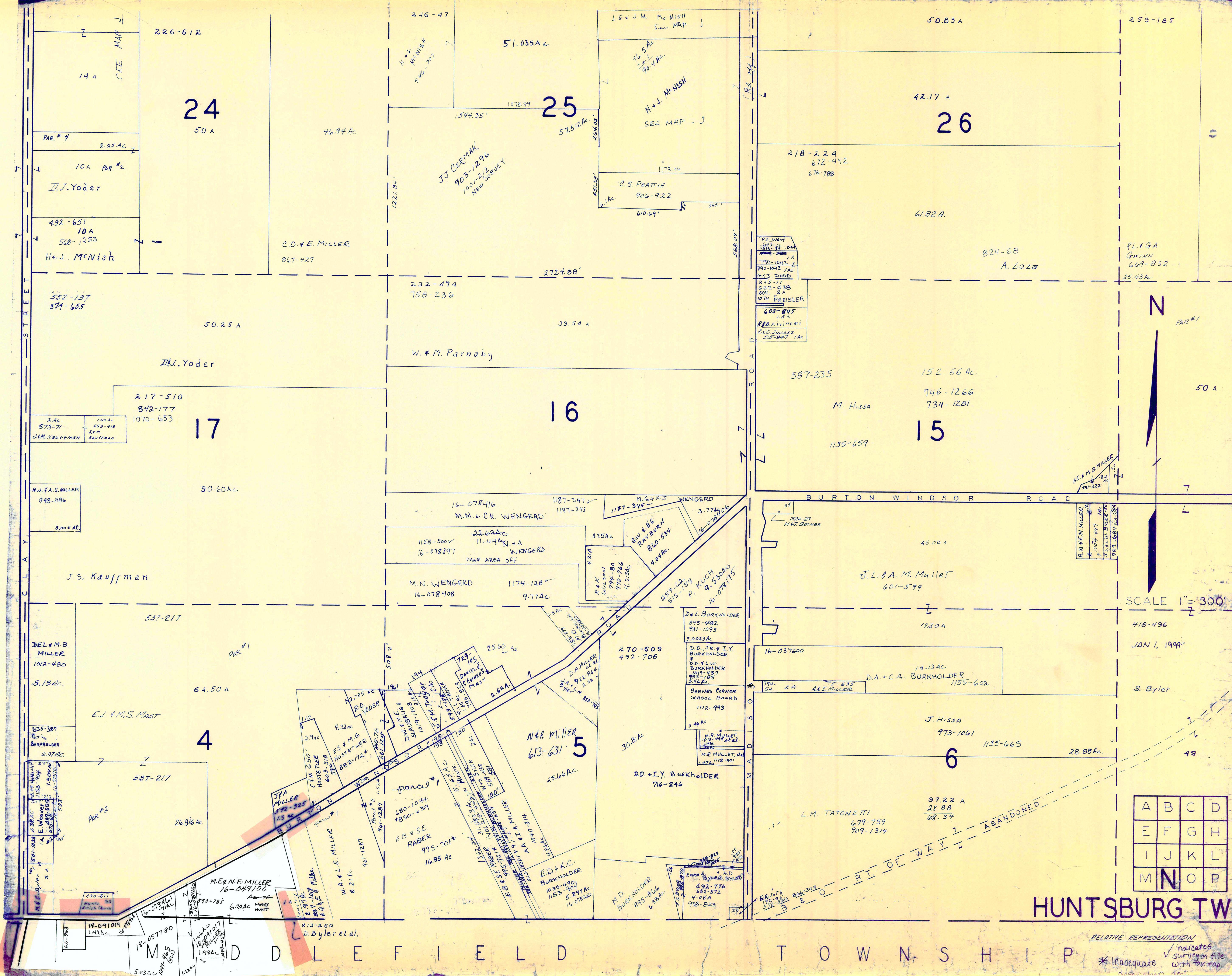
HUNT SBURG TWP

RELATIVE REPRESENTATION

JAN 1, 1999

M I D D L E F I E L D T O W N S H I P

\* Inadequate description  
✓ indicates survey on file with tax map dept.



SCALE 1" = 300'

JAN 1, 1999

S. Byler

|   |   |   |   |
|---|---|---|---|
| A | B | C | D |
| E | F | G | H |
| I | J | K | L |
| M | N | O | P |

# HUNTSGBURG TWP

RELATIVE REPRESENTATION  
\* Inadequate survey on file with tax map district

M D L E F I E L D T O W N S H I P



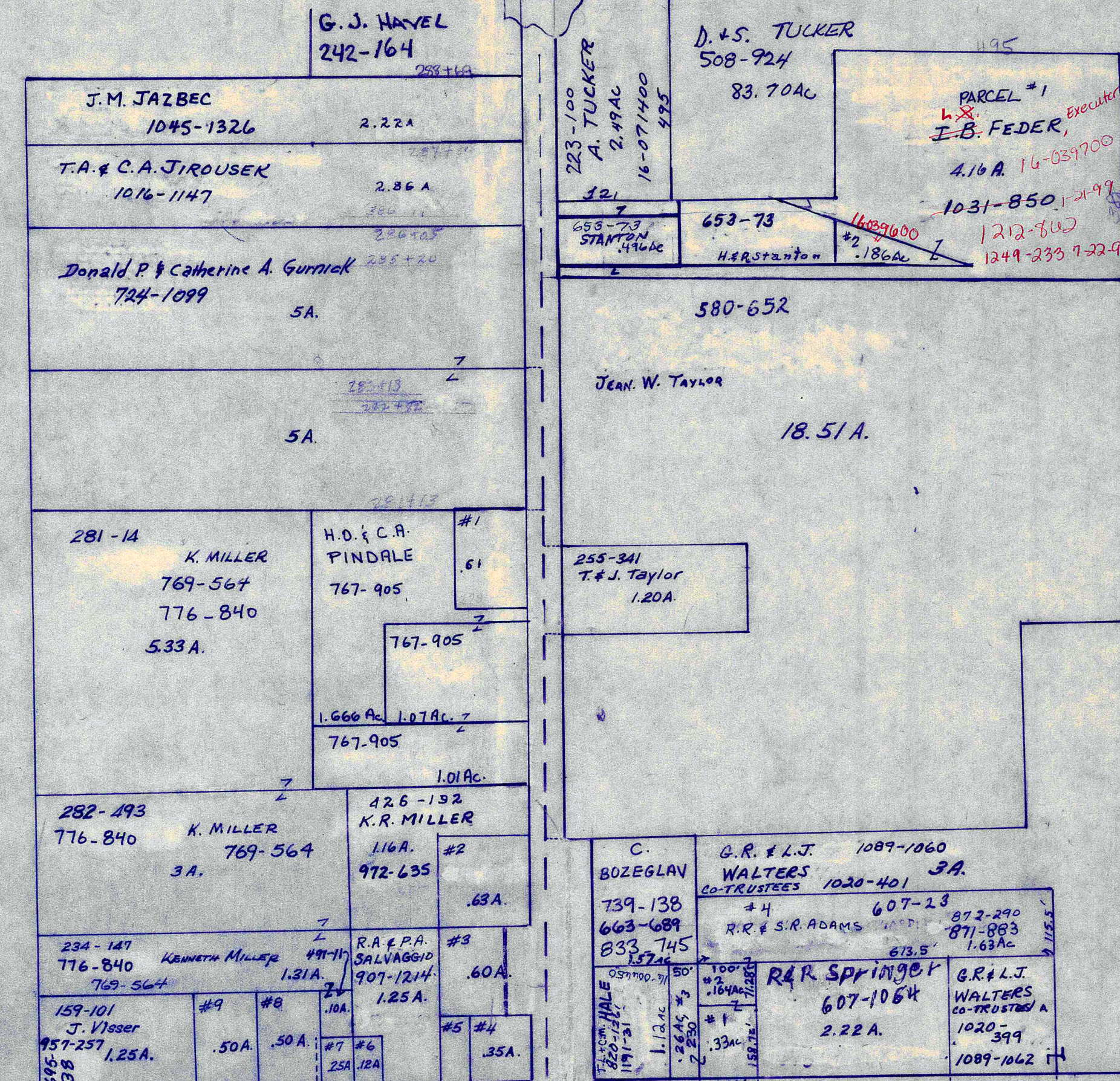


# HUNTSBURG TP. CENTER

### INDEX TO PROPERTIES HAVING #NO.'S

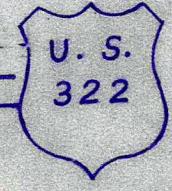
- #1 719-18 J.L. & K.M. WHITE .61 A.
- #2 1004-839 T.P. & S.M. THURLING S.S. 1060-746 .63 ac
- #3 971-1198 J.P. BRUENING .60 A.
- #4 491-321 Township of Huntsburg .35 A.
- #5 122-499, 130-169 Township of Huntsburg .10 ac
- #6 880-627429 T.P. & S.M. THURLING 1060-746 .13 ac 16-069700
- #7 943-920 D. HUTCHINSON .25 A.
- #8 776-840 K. MILLER .50 A.
- #9 890-1113 E.C. & D.S. PLICKERT .50 A.
- #10 747-676 KAREN EDITH PHILLIPS .50 A.
- #11 878-802\* J.A. BRUNER .07 A.
- #12 T.A. FRANK 1133-1252 .27 A.
- #13 878-802\* J.A. BRUNER .49 A.
- #14 T.T.J. TRUST 758-550 .05 A.
- #15 1004-560 L.R. CHURA & T.L. SHAFER .1726
- #16 539-27 S.E. RHODES .87 A.
- #17 720-803 J.A. & G. SYKORA S. COOK 26 A. 1/4 int
- #18 585-671 F. HALL .33 A.
- #19 T.A. LOZE & D. PERKO .50 A. 865-259
- #20 469-239 K. Motil .55 ac

PART OF  
LOT 56

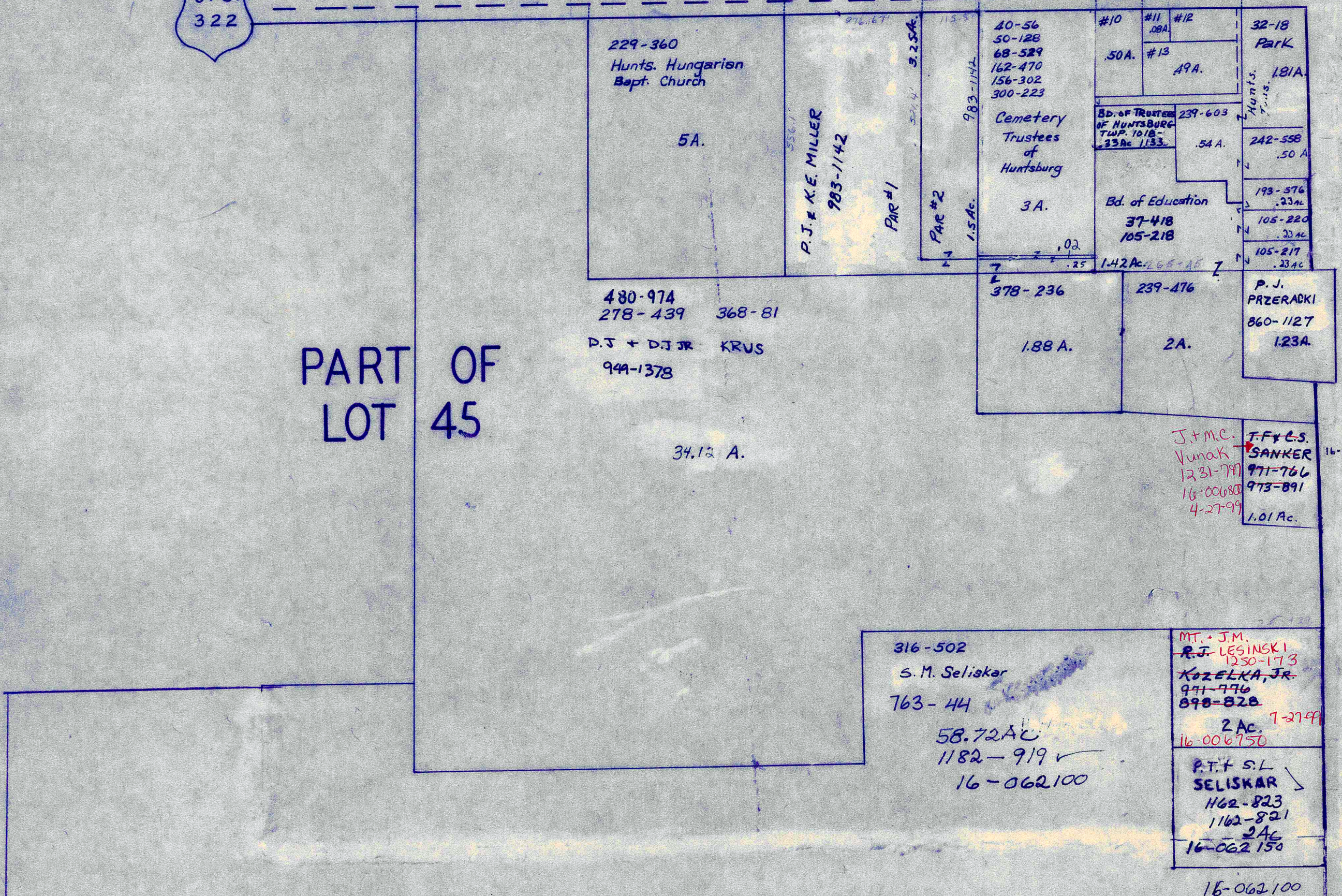


PART OF  
LOT 55

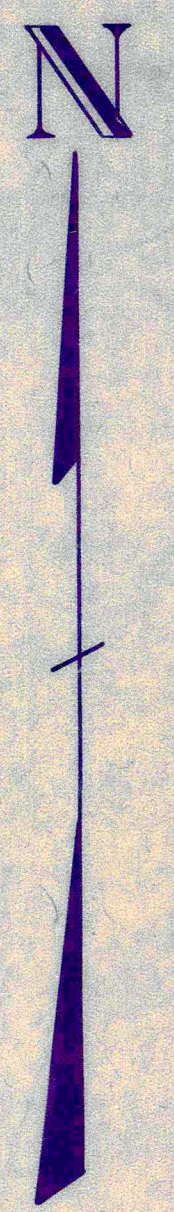
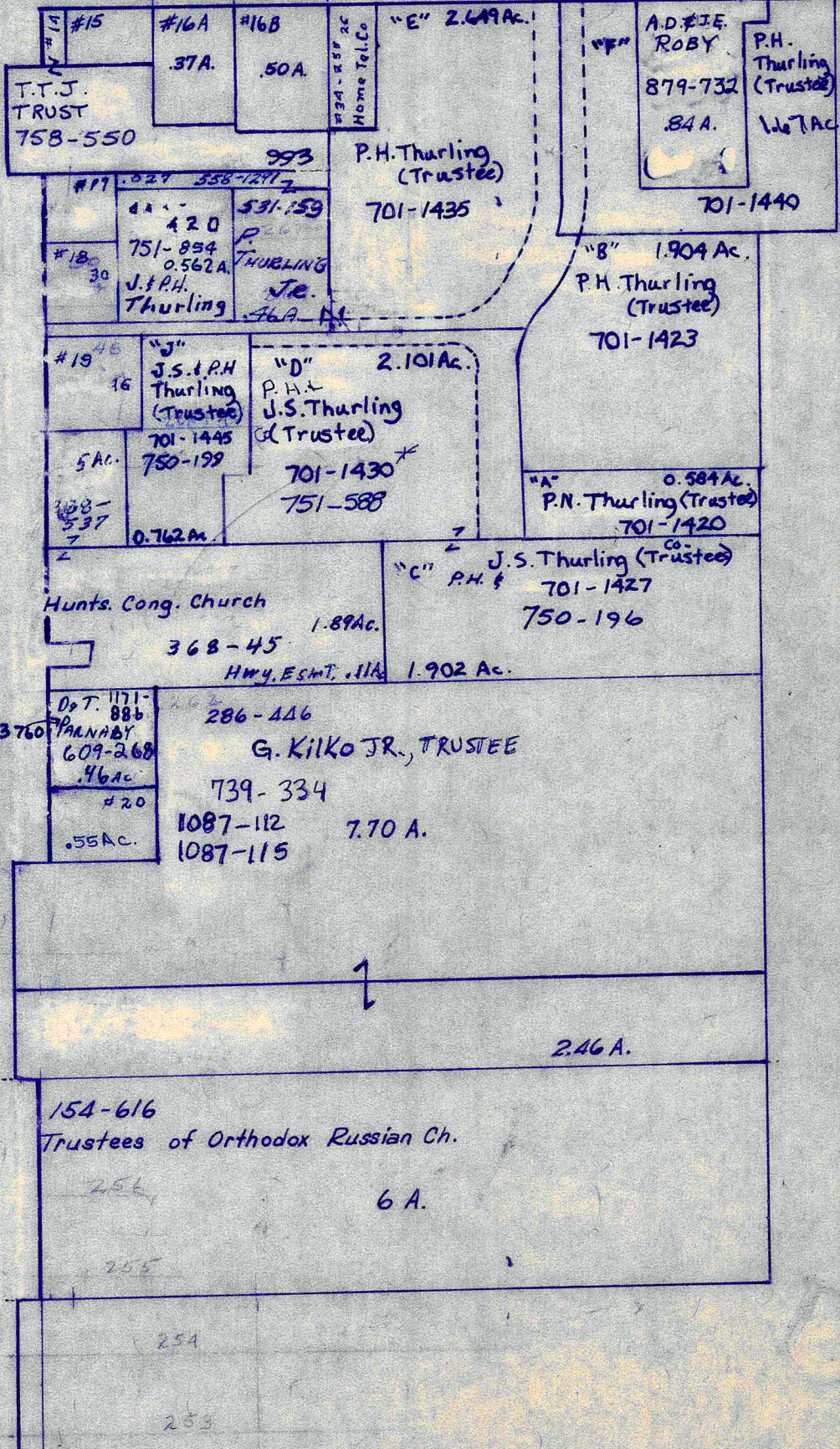
| INDEX TO PROPERTIES HAVING #NO.'S |                              |                  |
|-----------------------------------|------------------------------|------------------|
| #1                                | J.L. & K.M. WHITE            | 719-18 .61 ac    |
| #2                                | T.P. & S.M. THURLING S.S.    | 1060-746 .63 ac  |
|                                   |                              | 1004-839         |
| #3                                | J.P. BRUENING                | 971-1198 .60 ac  |
| #4                                | TOWNSHIP OF HUNTSBURG        | 491-321 .35 ac   |
| #5                                | TOWNSHIP OF HUNTSBURG        | 130-169 .10 ac   |
|                                   |                              | 122-499          |
| #6                                | T.P. & S.M. THURLING         | 1060-744 .13 ac  |
|                                   |                              | 880-627          |
| #7                                | D. HUTCHINSON                | 943-920 .25 ac   |
| #8                                | K. MILLER                    | 776-840 .50 ac   |
| #9                                | E.C. & D.S. PLICKERT         | 890-1113 .50 ac  |
| #10                               | K.E. PHILLIPS                | 747-676 .50 ac   |
| #11                               | * J.A. BRUNER                | 878-802 .07 ac   |
| #12                               | T.A. FRANK                   | 1133-1252 .27 ac |
| #13                               | * J.A. BRUNER                | 787-802 .49 ac   |
| #14                               | T.T.J. TRUST NO. 2           | 758-550 .05 ac   |
| #15                               | L.R. CHURA & T.L. SHAFER     | 1004-560 .17 ac  |
| #16                               | T.T.J. TRUST NO. 2           | 1086-1174 .37 ac |
|                                   |                              | 1086-1174        |
| #16B                              | T.P. THURLING                | 1086-1174 .50 ac |
| #17                               | J.I.R. & G. SYKORA & S. COOK | 723-803 .26 ac   |
| #18                               | F. HALL                      | 585-671 .33 ac   |
| #19                               | T.A. LOZE & D. PERKO         | 865-259 .50 ac   |
| #20                               | K. MOTIL                     | 469-239 .55 ac   |



PART OF  
LOT 45



PART OF  
LOT 46



JAN. 1, 1999  
SCALE: 1 in. = 200'

RELATIVE REPRESENTATION  
✓ indicates survey on FILE WITH TAX MAP DEPT.

\* inadequate description